

NEW

CARRIERE®
MOTIONPRO™



The New Standard in Bite Correction



We've taken fast, predictable, and discreet bite correction from revolutionary to essential.

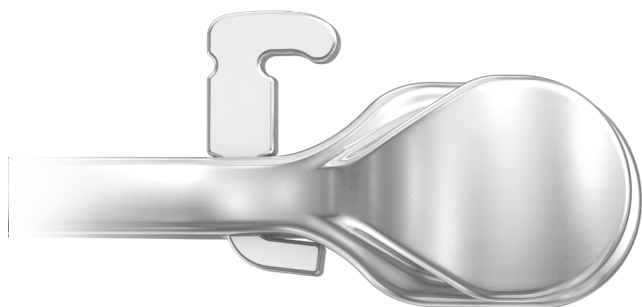
Dr. Luis Carrière invented the *Carriere*® *Motion*™ appliance and popularized the *SAGITTAL FIRST*™ philosophy. With decades of proven, predictable performance, the *SAGITTAL FIRST* philosophy with the *Motion* appliance provides a time-tested approach that standardizes, simplifies, and shortens Class II and Class III treatment time.*

Every surface has been smoothed, every profile lowered, and every detail perfected. With more than a million confident smiles treated using *Motion*, the path to a new standard is here.

Introducing the *Carriere Motion Pro*™ bite corrector.



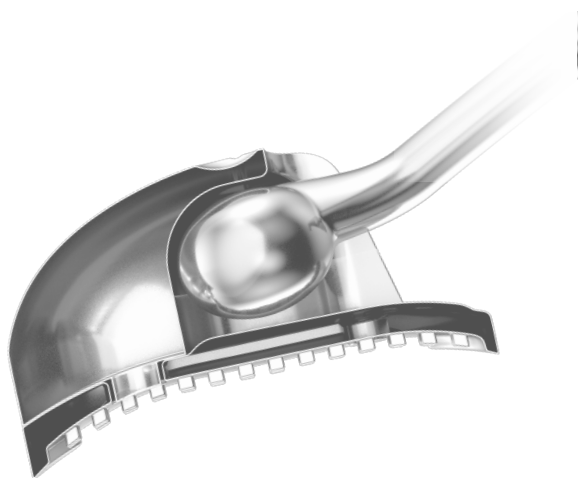
* Data on file



Intuitive

Seamless design for improved handling

- Built-in **scribe line**, **flat faces**, **straight edges**, and a **recessed dimple** provide intuitive and accurate placement.
- **Anatomically shaped** molar pad and contoured cuspid pad ensure just the right fit.
- Side-specific design ensures an **optimal range of motion**, allowing precise placement on mesially-tipped molars.



Versatile

Engineered to set a new standard in versatility

- Treats both **Class II & III** patients with one device.
- Custom-designed **Drop-In Hook** contributes to a new level of treatment versatility.

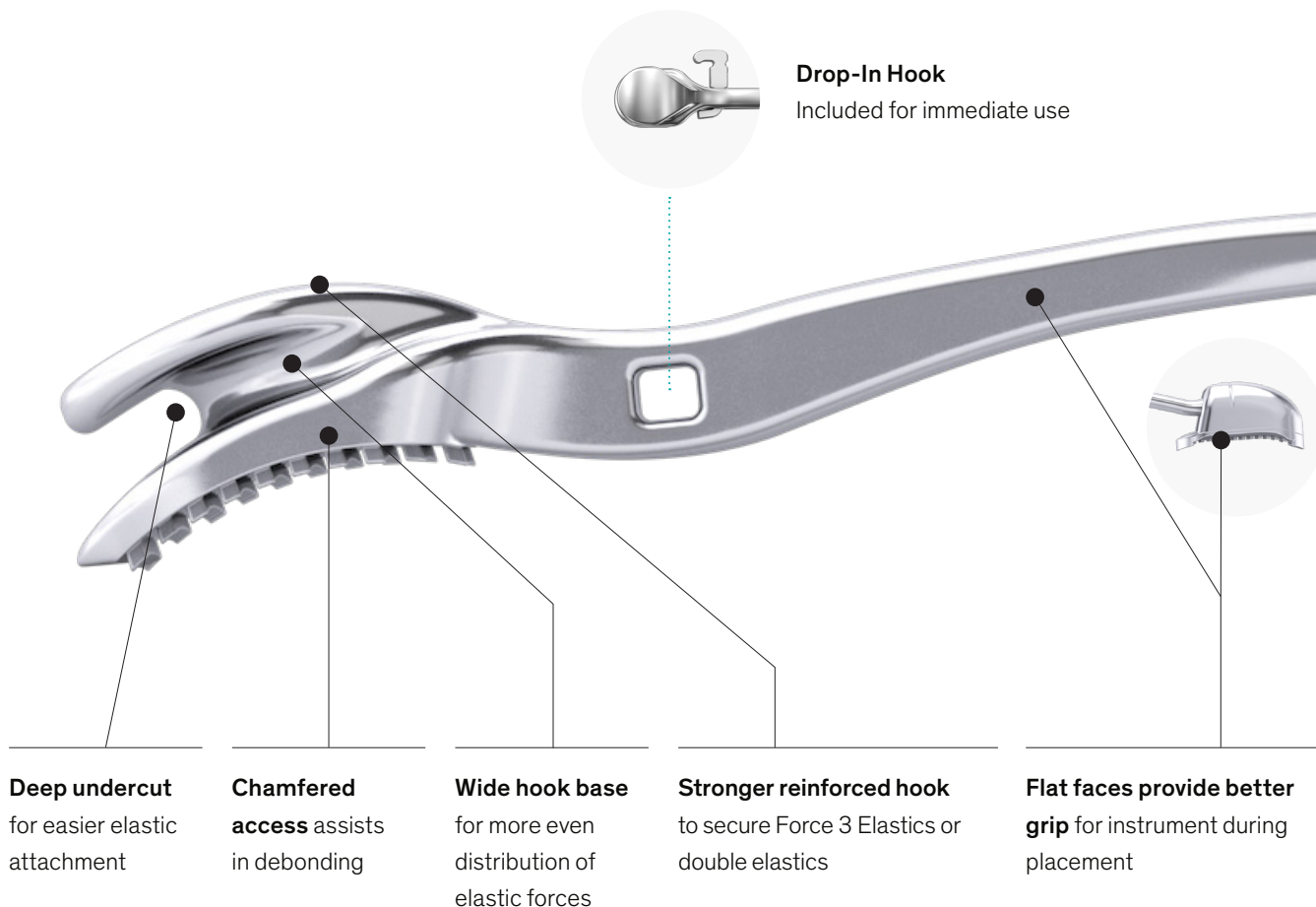


Efficient

Fast and predictable treatment

- Inspired by the human body, the **condyle shape** is designed to facilitate more natural and controlled movement.
- The **wider reinforced hook** ensures a consistent distribution of elastic forces.
- The hook's **deep undercut** simplifies elastic engagement and effectively secures the **new Force 3 Elastics**.

New design features based on decades of clinical experience



Deep undercut
for easier elastic attachment

Chamfered access assists in debonding

Wide hook base for more even distribution of elastic forces

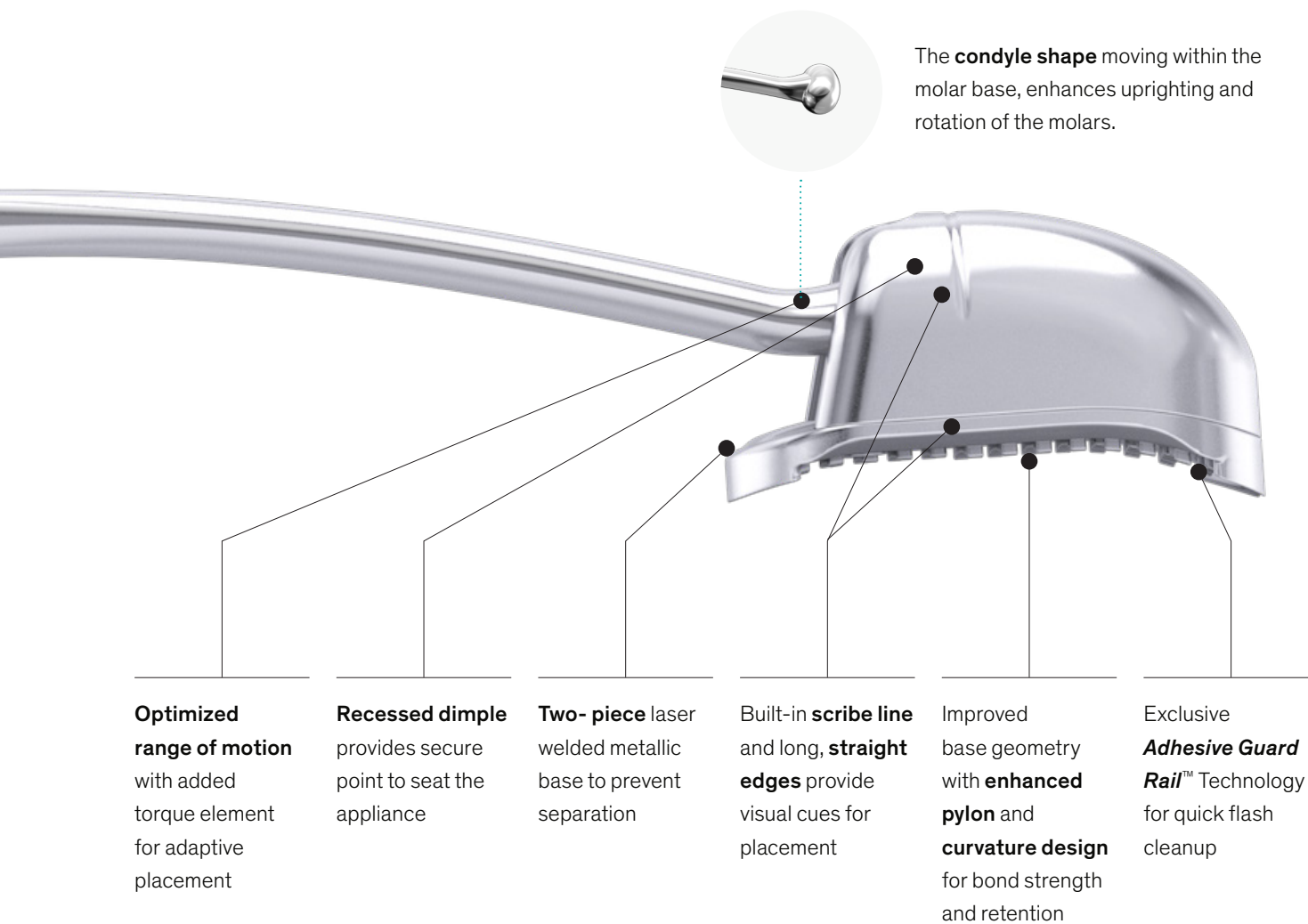
Stronger reinforced hook to secure Force 3 Elastics or double elastics

Flat faces provide better grip for instrument during placement

Included Drop-In Hook



- Custom-designed for *Motion Pro* to enhance treatment versatility.
- Facilitates attachment of various orthodontic auxiliaries such as elastomeric chain, nitinol springs, ligature wire, and elastics.
- Designed with a rectangular channel to prevent Drop-In Hook from rotating.



Importance of a Side-Specific Design

- Its side-specific design ensures the ideal range of motion and **aids in optimized placement on mesially-tipped molars.**
- Side-specific features to **prevent over-corrections and undesired movements.**
- Universal designs still require the same amount of inventory as a side-specific design, as two appliances per patient are recommended!

Every surface has been smoothed, every profile lowered, every detail perfected.



25% Profile Reduction^{*/**}

Lower profile flat base for patient comfort



Deeper Undercut

Deeper access under hook for easier elastic attachment



Smooth Surfaces

Full face hook and smooth surfaces make it comfortable for patients to wear, not poking the lips or cheeks



Reinforced Flat Hook

Secures even the new, stronger *Carriere Force 3* Elastics or double elastics, when needed



Shorten Treatment Time

Overall treatment time is reduced by standardizing treatment protocols and starting cases from a Class I platform^{**}



Same Day Starts

Takes under 15 minutes to place and can be bonded immediately after the patient consultation^{**}



No Lab Delays

Eliminates lab time delays with direct-bond placement



*Compared to *Motion 3D* Class II appliance.

**Data on file.

Features



Motion Pro

Motion 3D Colors

Motion 3D Clear

Treats AP dimension at the beginning of treatment



Built-in engineered stops to prevent overcorrection



Simple, direct bond pads



Scribe line on molar base for positioning



Treats Class II & III with one device



—

—

Includes Drop-in Hook for added versatility



—

—

Reinforced flat hook with wider base



—

—

Deep hook undercut for easier elastic attachment



—

—

Condyle-shaped end for more natural and controlled movement



—

—

Optimized range of motion with torque element for adaptive placement



—

—

Recessed dimple provides secure point to seat the appliance



—

—

Long, straight edges for visual cue during placement



—

—

Flat faces for better grip for instrument during placement



—

—

25% reduced profile for patient comfort



—

—

Adhesive Guard Rail technology for quick flash cleanup



—

—

Two piece laser welded metallic base to prevent separation



—

—

Chamfered access to assist in debonding



—

—



Motion Pro for Class II Treatment

Indications for Class II

- Class I, Crowding
- Class II, Division 1
- Class II, Division 2
- Class II, Open bite
- Class II, Deep bite
- Class II, Blocked out upper canines
- Class II, Subdivision, left or right (unilateral)
- Mixed Dentition (Phase 1)

Class II Biomechanics

Before Treatment

1. Excessive overbite
2. Anterior crowding
3. Mesially rotated molars



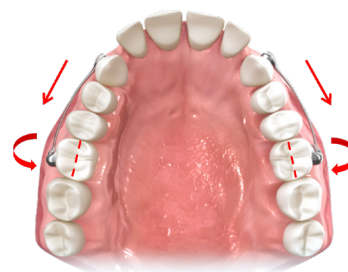
During Treatment

Using gentle, uniform forces, *Motion Pro* achieves ideal Class I occlusion by simultaneously:

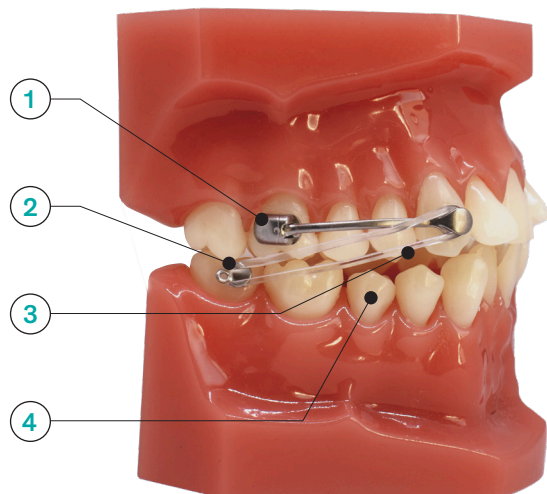
- Rotating**
Rotating the maxillary first molars around the palatal root
- Uprighting**
Uprighting the maxillary first molars
- Distalizing**
Distalizing the maxillary posterior segment – from canine or first premolar to first molar, as a unit

After Treatment

1. Space is gained to resolve crowding without extractions
2. Molars and canines in Class I relationship



Setup for Class II Treatment



Step 1

Appliance is bonded from the upper first molar to the canine or first premolar

Step 2

Bondable hook or molar tube is bonded to the lower first or second molar

Step 3

Elastics connect the appliance anterior pad to the bondable hook or molar tube

Step 4

Vacuum-formed retainer, clear aligner, or lingual arch provides anchorage for mandibular arch



Motion Pro for Class III Treatment

Indications for Class III

- Class I, Crowding
- Class III, Deep Bite
- Class III, Open Bite
- Class III, Unilateral
- Class III, Cleft Palate
- Mixed Dentition (Phase 1)
- As an **alternative to surgery**

Class III Biomechanics

Before Treatment

1. Excessive underbite
2. Mesially-tipped molars



Case provided by Dr. Luis Carrière

During Treatment

Counterclockwise change in the occlusal plane by:



Intruding

Intruding the lower molars while extruding the canines



Distalizing

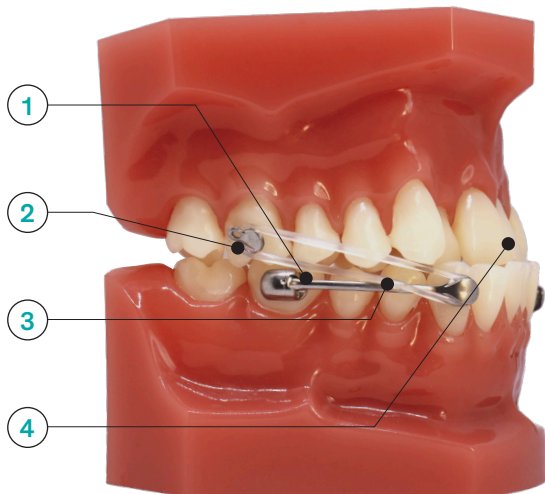
Distalizing the mandibular posterior segment, from canine to molar, as a unit

After Treatment

1. Space is gained to resolve crowding without extractions
2. Molars and canines in Class I relationship



Setup for Class III Treatment



Step 1

Appliance is bonded from the lower first molar to the canine or first premolar

Step 2

Bondable hook or molar tube is bonded to the upper first or second molar

Step 3

Elastics connect the appliance anterior pad to the bondable hook or molar tube

Step 4

Vacuum-formed retainer, clear aligner, or brackets provide anchorage for maxillary arch



SAGITTAL FIRST: The Ultimate Success Formula

The *SAGITTAL FIRST* philosophy is a time-tested approach that standardizes, simplifies, and shortens Class II and Class III treatment time. It employs the *Carriere Motion Pro* bite corrector to treat the AP dimension at the beginning of treatment before placing brackets or aligners. By resolving the most difficult part of treatment first, you can achieve a Class I platform in 3 to 6 months, shortening total treatment time by a minimum of 6 months*. You know how excited patients and parents become when you mention shorter treatment times!



Benefits of Using SAGITTAL FIRST

Standardizes and Simplifies Treatment

- Utilizes same treatment protocol (*SAGITTAL FIRST* philosophy) no matter the malocclusion type
- Simplifies treatment and planning
- Eliminates lab time delays with direct-bond placement

Shortens Overall Treatment by up to 6 Months*

- Eliminates competing forces associated with AP correction while wearing fixed appliances
- Fosters greater patient compliance at the start of treatment, when patient motivation is highest
- Establishes a Class I platform in 3 to 6 months*

Increases Conversion Rates with Same-Day Starts

- Can be bonded immediately after the consultation
- Takes under 15 minutes to place and educate the patient*
- Minimize extractions to help build your practice

More Treatment Options for Patients

- Provides simple bite correction for clear aligner treatment
- Offers opportunity to postpone decision about whether to finish with brackets or aligners based on compliance, hygiene, and treatment progress

Aligner Treatment: Increase Predictability with Motion

Let *Motion* do the heavy lifting for you!

Reduce complexity and the number of aligners, while shortening treatment time with the *Carriere Motion* appliances. Jumpstart your aligner patients with *Motion* to provide the most efficient and aesthetic treatment solution available.



Up to 71% fewer aligners with *Motion* appliances*

	CONVENTIONAL APPROACH WITH ALIGNERS ONLY	SAGITTAL FIRST WITH <i>MOTION</i> PRIOR TO ALIGNERS	% FEWER ALIGNERS
CASE #1	83 Aligners	28 Aligners	66%
CASE #2	45 Aligners	13 Aligners	71%
CASE #3	39 Aligners	21 Aligners	48%



"By correcting the sagittal first with Motion 3D, I've reduced my number of aligners by an average of 62%! I've improved facial aesthetics, airway and TMJ when needed - in a way that I am not able to do with aligners alone."

— **Dr. Luis Carrière**

* Data on file

MOTION PRO ORDERING

Singles & Sets

DESCRIPTION	SIZE	COLOR CODE	UL/LR	UR/LL	SET			
MOTION Pro BITE CORRECTOR	16 mm	○	425-916ULLR*	425-916URLL*	425-916C*			
	18 mm	●	425-918ULLR	425-918URLL	425-918C			
	20 mm	●	425-920ULLR*	425-920URLL*	425-920C*			
	23 mm	●	425-923ULLR	425-923URLL	425-923C			
	25 mm	●	425-925ULLR	425-925URLL	425-925C			
	27 mm	●	425-927ULLR	425-927URLL	425-927C			
	29 mm	●	425-929ULLR*	425-929URLL*	425-929C*			
	31 mm	●	425-931ULLR*	425-931URLL*	425-931C*			
COLOR CODE	○	●	●	●	●	●	●	●
	White	Blue	Pink	Yellow	Red	Green	Purple	Gray

Order Recommendations

DESCRIPTION	SET QTY	SIZE	ITEM NO
3 SETS	1	23 mm	425-923C
	1	25 mm	425-925C
	1	27 mm	425-927C
6 SETS	1	16 mm	425-916C*
	1	18 mm	425-918C
	1	20 mm	425-920C*
	1	23 mm	425-923C
	1	25 mm	425-925C
	1	27 mm	425-927C
20 SETS	2	16 mm	425-916C*
	3	18 mm	425-918C
	2	20 mm	425-920C*
	3	23 mm	425-923C
	6	25 mm	425-925C
	4	27 mm	425-927C

Motion Pro Ruler

DESCRIPTION	ITEM NO
MOTION Pro Ruler (10/pk)	425-8RULER-10



Purposeful Packaging

Each *Motion Pro* device is packaged individually for simplified inventory management.

- *Motion Pro* is oriented inside the single pack to facilitate direct access with placement instruments.
- Single packs show appliance size and left/right configuration on the outside tab for easier identification and inventory control.
- Single and set packs are simpler, smaller and more elegant, taking up less space in the office.
- Each single pack is secured with a pull-tab label.

* Coming soon - call for availability

Typodonts & Models

DESCRIPTION	ITEM NO
MOTION Pro Class II Typodont with Clear Aligner	631-MPRO-C2
MOTION Pro Class III Typodont with Clear Aligner	631-MPRO-C3
MOTION Pro 5x Model	631-425X



Instrument

DESCRIPTION	ITEM NO
MOTION Placement Instrument	201-507

Motion Placement Instrument

Reverse action tweezer with a spring-action designed to open and close around *Motion* appliances.

- Notch designed within tip to fit around appliance.
- Securely holds appliance without rotating or shifting.



Sidekick Bondable Hook

Engineered to partner seamlessly with *Motion* appliances, the *Sidekick*™ Bondable Hook further simplifies the *SAGITTAL FIRST* philosophy.

- One-piece MIM manufacturing process for exceptional strength.
- Pull extraction access eyelet for versatility during orthodontic treatment.
- *Adhesive Guard Rails* for easier flash clean up.

Attachments

DESCRIPTION	ITEM NO
MOTION Sidekick Bondable Hook (pack of 10)	430-003

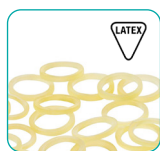
FORCE 1, FORCE 2, & FORCE 3 ELASTICS

All New Force 3 Elastics Now Available

Complement the *Motion Pro* with *Force 1*, *Force 2*, and *Force 3* Elastics, which were designed specifically to work seamlessly with this appliance and provide optimum results. These elastics are available in three different force levels for stages of treatment, ensuring a smooth and timely transition to a Class I Platform.

In addition to *Force 1* and *Force 2* Elastics, doctors now have an alternative to double elastics by using a single *Force 3* Elastic (1/4" 11 oz latex elastics).

Box contains 50 packs of 100 Orthodontic Elastics



Latex Elastics

DESCRIPTION	FORCE LEVEL	BAND	ITEM NO
MOTION FORCE 1 Latex Elastics	FORCE 1 • 1/4", 6 oz.	Amber	424-9F1
MOTION FORCE 2 Latex Elastics	FORCE 2 • 3/16", 8 oz.	Amber	424-9F2
MOTION FORCE 3 Latex Elastics	FORCE 3 • 1/4", 11 oz.	Amber	424-9F3

Made with natural rubber latex



Non-Latex Elastics

DESCRIPTION	FORCE LEVEL	BAND	ITEM NO
MOTION FORCE 1 Non-Latex Elastics	FORCE 1 • 1/4", 6 oz.	Clear	424-8F1
MOTION FORCE 2 Non-Latex Elastics	FORCE 2 • 3/16", 8 oz.	Clear	424-8F2

Not made with natural rubber latex

We want to help you bring more patients into your office and educate them once they are there!

Websites

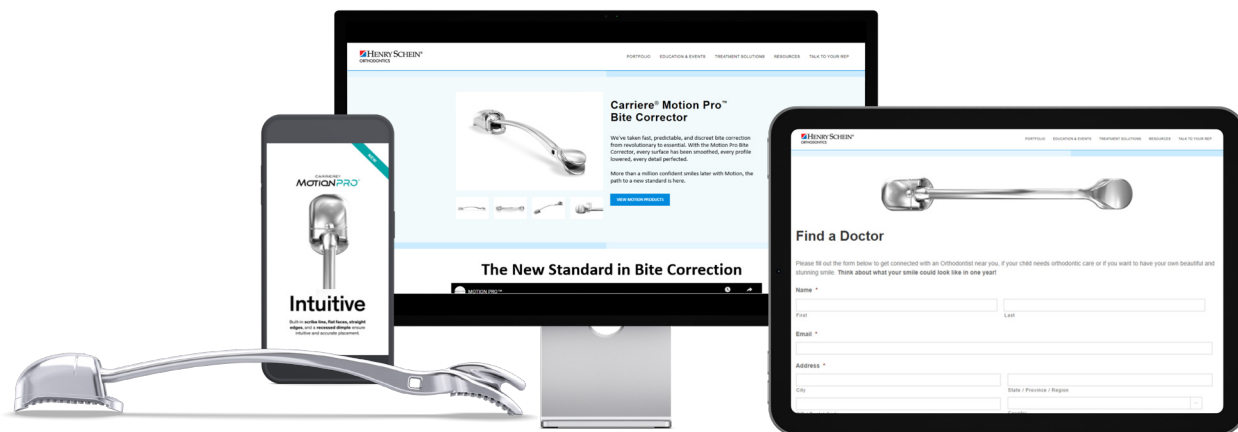
For patients CarriereConfidence.com

With “Find a Doctor” tool: As an HSO customer, potential and interested patients can submit a request for an orthodontic professional near them.

For doctors [Marketing Toolkit](#)

With “Marketing Toolkit”: Utilize existing logos, product images, videos, model shots, and content for your website, social media, advertising, and more!

1. Visit HenryScheinOrtho.com/Marketing-Toolkit-Request
2. Complete the form and gain access within 2 business days.



Patient Brochures

DESCRIPTION	ITEM NO
Carriere Motion Pro Patient Brochure (10 per pack)	999-357
Motion Elastic Protocol for Patient Tear Pad (50 per pack)	999-518

Patient Banner Stands

DESCRIPTION	ITEM NO
Patient Banner Stand – Surfer Girl	999-341
Patient Banner Stand – Tennis Boy	999-342
Patient Banner Stand – Pedo Girl	999-344

Banner Stand Size: 32" x 82.87" x 11.2"



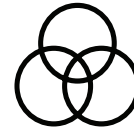
FIND YOUR PERFECT ORTHODONTIC SOLUTION

Henry Schein® Orthodontics™ aims to deliver next generation orthodontic solutions and new treatment concepts to help you provide exceptional clinical outcomes, and to ensure that you, as an orthodontist, truly love what you do.



Exceed Your Expectations

Delivering new ideas and treatment concepts to help you provide exceptional clinical outcomes.



Beyond the Basics

We go beyond supplier-client relationship to cultivate partnerships with our customers to deliver positive patient outcomes.



State of the Art

Orthodontic products and solutions enable our customers to offer exceptional patient care.



World-Class Products

Products you have come to trust. We create partnerships with you that go beyond the supplier-client relationship.



For more information on our products and educational offerings, please contact us:
HenryScheinOrtho.com

Customer Service: **888.851.0533**
In the U.S.: **800.547.2000**
Outside the U.S.: +(1) **760.448.8600**
Canada: **CERUM 800.661.9567**

To email an order: USASales@HenryScheinOrtho.com
To email an order from outside the U.S.: HSOIntOrders@HenrySchein.com
Ortho Organizers, Inc. 1822 Aston Ave. Carlsbad, CA 92008-7306 USA
© 2023 Ortho Organizers, Inc. All rights reserved. Patent Pending. 999-356 Rev A 10/23

