



performance<sup>x</sup>  
LINE **SYS-  
TEM**  
**OVER-  
VIEW**



# Philosophy

TRI® Dental Implants is an innovative provider of digital implant solutions from Switzerland. Join our unique approach in implant dentistry!



Founder & CEO  
Tobias S. Richter



## SWISS QUALITY

High-Quality Products from more than 25 years of World Class Production



## THINK DIGITAL

TRI+ Digital Solutions for simple, fast and cost-efficient digital workflows



## PERFORMANCE

4 Gold Standards for maximum performance in your daily clinic



## SIMPLICITY

A unique handling experience driven by an intelligent portfolio with 50% less components

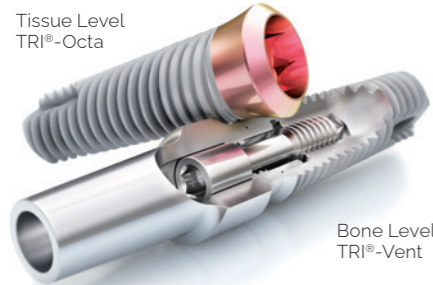


# Success factors of the TRI<sup>®</sup> Dental Implant System.

## TRI<sup>®</sup> Performance Concept

(Pag. 5-11)

The TRI<sup>®</sup> Performance Concept integrates 4 Gold Standards, in order to make the life of the practitioner as simple and yet high performing as possible to achieve natural esthetic results in daily practice.



## Implant Lines

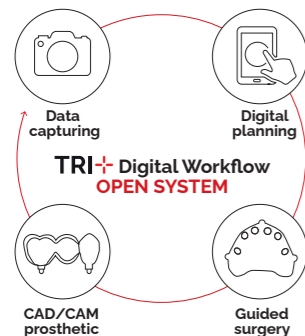
(Pag. 14)

The TRI<sup>®</sup> Performance Concept is incorporated in the Bone Level (TRI<sup>®</sup>-Narrow, TRI<sup>®</sup>-Vent) and Tissue Level (TRI<sup>®</sup>-Octa) implant lines and ensures optimal esthetic results both in the anterior and posterior area.

## Packaging

(Pag. 11)

The revolutionary touchless delivery concept TRI<sup>®</sup> Pod allows to pick-up the implant directly with the surgical hand-piece in one single step. Whilst guaranteeing the highest purity of the TRI<sup>®</sup> SBA surface. A true design innovation which will take your surgical performance to a new level.



## TRI<sup>®</sup> Digital

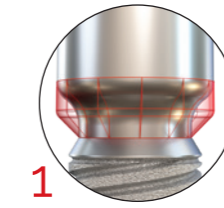
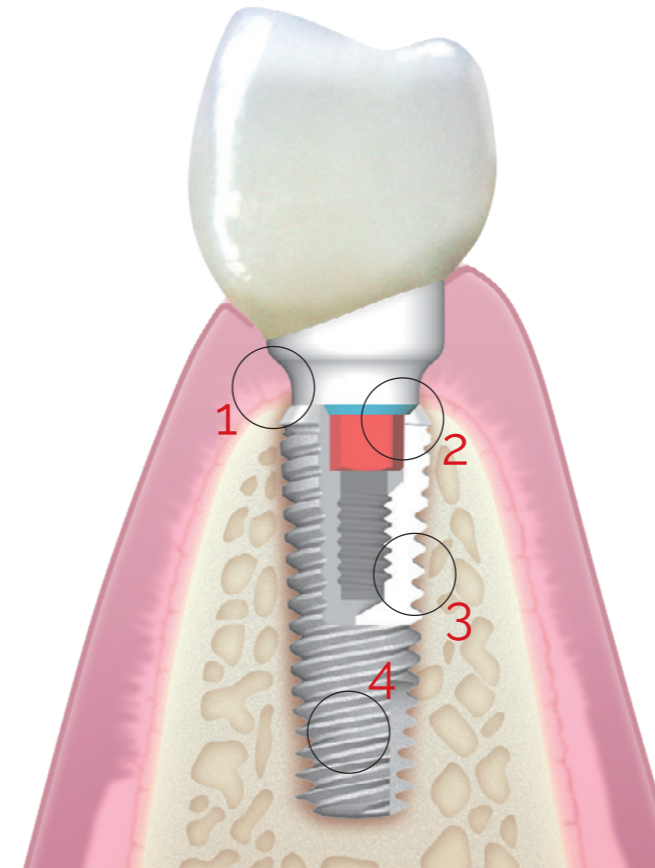
(Pag. 12-13)

TRI<sup>®</sup>+ Digital Solutions guarantees a universal implant open interface to leading technology partners in digital dentistry. TRI<sup>®</sup>+ Digital Solutions allows a wide range of indications via 3D Planning, Guided Surgery, CAD Abutments, CAD/CAM screw-retained and cement-retained restorations or modern treatments such as All-on-TRI<sup>®</sup> procedures



# TRI<sup>®</sup> Performance Concept 4 gold standards in one concept.

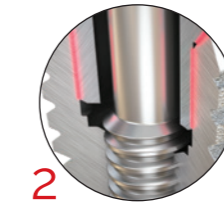
The TRI<sup>®</sup> Dental Implant System integrates four essential technology features. Each feature aims to provide maximum performance and lasting quality for the treatment of the dentist. We combine these elements in the TRI<sup>®</sup> Performance Concept.



1

## Soft Tissue Concept (Pag. 6-7)

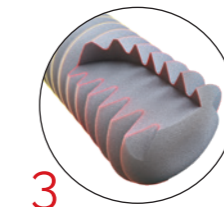
- + Integrative platform-switch concept to preserve the crestal bone
- + Consistent soft tissue management within all prosthetic components
- + Homogeneous transition between implant and abutment to avoid «dirt pockets»



2

## Friction (Pag. 8)

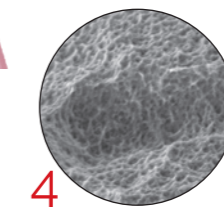
- + Secure abutment stability through a dense tapered press fit
- + Elimination of micro-movements between implant and abutment
- + Internal hex for guided abutment positioning



3

## Boneadapt (Pag. 9)

- + High primary stability through a tapered implant body with self-cutting thread
- + Bio-mechanical bone-adaption with maximum bone-to-implant contact
- + Optimized conservation of the cortical bone through macro-thread design



4

## SBA\* Surface (Pag. 10-11)

- + Fast and reliable osseointegration
- + Industry gold standard for secure osseointegration for more than 20 years
- + World's most scientifically proven surface technology.

\*SBA: Sand-Blasted, large-grit, double Acid-etched

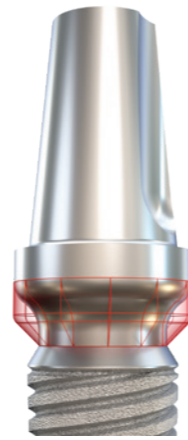
# TRI® Soft Tissue Concept For long-term esthetic results.



**Healing Collar**



**Impression Transfer & Scanbody**



**Abutment**

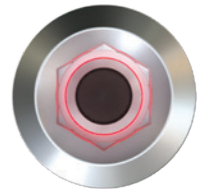
The soft-tissue interface of the TRI® Dental Implant System is unique and innovative at the same time. The continuous platform switch allows for a consistent and tight soft tissue seal around the implant abutment connection. All prosthetic components integrate a consistent emergence profile – covering all components, from impression post and healing cap to the final abutment.



## Consistent Emergence Profile.

The soft tissue interface is smooth and leaves no "dirt pockets" despite its broad platform switching concept. As a result, the soft tissue protects and seals the critical implant-abutment interface.

# TRI® Prosthetic Line One connection fits all.



## Maximum prosthetic flexibility with ONLY one connection

With only one prosthetic connection per implant line TRI® reduces the number of components to a minimum, optimizing the handling and storage requirements in the daily practice. Choose your optimal abutment with the TRI® Soft Tissue Concept, to achieve high-end esthetic results.

## Highlights Products



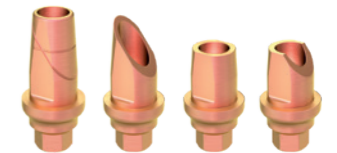
### Impression Posts

TRI® offers revolutionary, patented instrument-free innovations for closed-tray and open-tray impression taking: digital or analog.



### All-on-TRI® Abutment

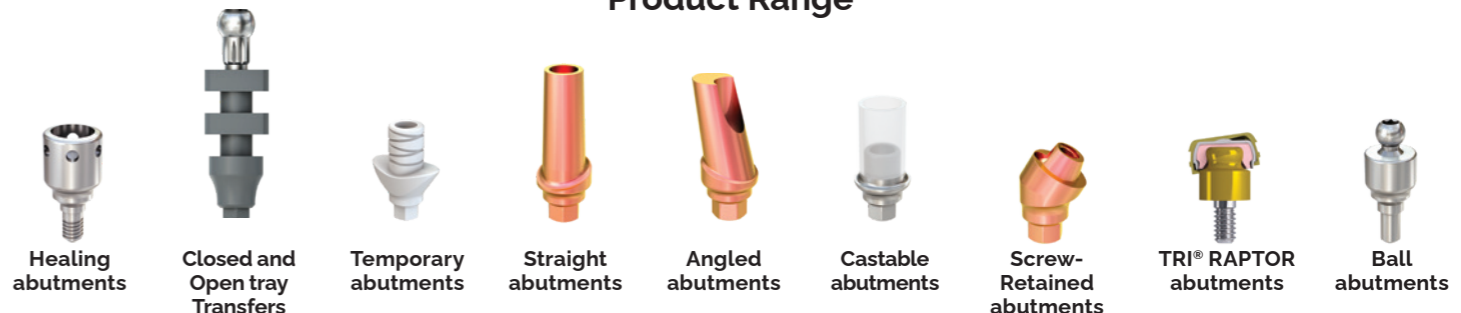
The „All-on-TRI“ Abutment allows for efficient and predictable treatment of fully edentulous patients with limited available bone.



### TRI®-Base

The newly patented TRI®-Base is the first Ti-Base that can be customized in length and angulation, both physically by the technician and digitally in the respective CAD Software.

## Product Range



# TRI® Friction For a secure connection.

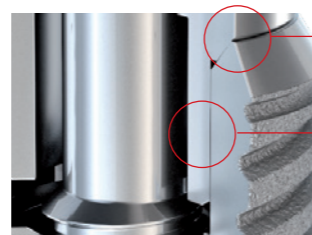


**Probably the strongest connection in the world.**

TRI® FRICTION is a technologically unique prosthetic connection and an integral element of the TRI® Performance Concept. A production tolerance of 0.006 mm guarantees the perfect and highly precise fit of the prosthetic components with long-term stability.

## Advantages of TRI® FRICTION:

- + Press fit for maximal abutment stability
- + Avoid micro movements between implant and abutment
- + No screw loosening through rotational stability
- + Improved handling through retention of the abutment even without screw



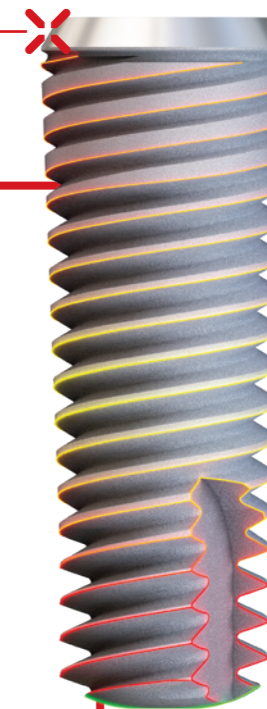
Internal conical 45 degree connection to eliminate the micro-gap.

Frictional internal hexagon connection for maximum rotational and axial stability.

# TRI® BoneAdapt For immediate stability.

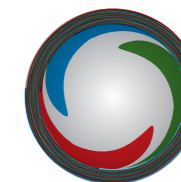
PLATFORM SWITCH NECK DESIGN  
to shift the biological width horizontally  
and stabilize the crestal bone

- + **Crestal thread design**  
with square thread pattern to protect the cortical bone
- + **Body thread design** (60 degrees)  
to enhance bone surface area in the spongiosa for optimal bone-to-implant contact
- + **Apical thread design** (45 degrees)  
with increased sharpness for immediate primary stability
- + **Round Apex**  
to protect the Schneiderian Membrane



## Triple-lead threads

Three independent threads start 120° apart and spiral around the implant body and end on the crestal vertical groove. Triple threads provide a lead of 1.8 mm per rotation as an average.





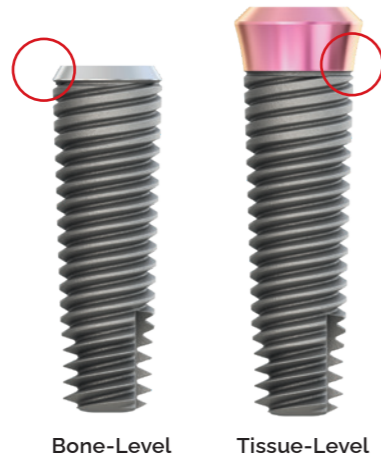
# TRI<sup>®</sup> SBA Surface

## For predictable osseointegration.

The TRI<sup>®</sup> SBA (sandblasted, large grit, acid-etched) surface is one of the industry gold standards for more than 20 years. It is created by blasting the implant surface under pressure with corundum particles. In the final step the surface is acid-etched twice in order to attain a medium roughness.

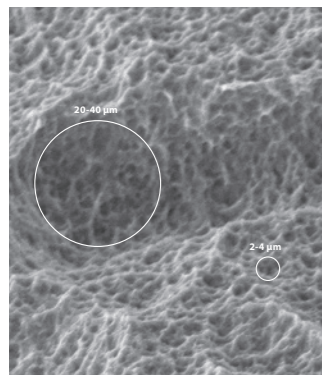
### Machined implant neck

The bone level implants feature a 0,5 mm machined neck in the crestal area.



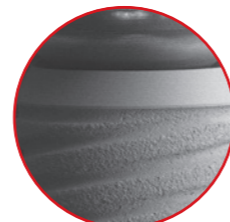
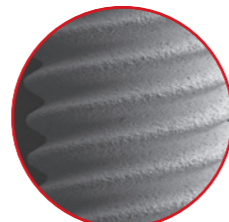
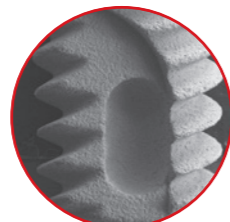
### Gingiva coloured implant collar

The tissue level implant features a 1,8mm machined implant collar for optimal esthetic results in the posterior area.



### Surface structure

A macrostructure of 20-40 µm and a micro structure of 2-4 µm as an ideal basis for excellent osseointegration. This structure has been proven by numerous clinical studies for this surface type.



# TRI<sup>®</sup> Pod

## Handling. Reinvented.

### 3 Options for Implant Insertion



Ratchet



Handpiece



By hand



**Step 1**  
Open Lid



**Step 2**  
Rotate To Remove  
implant



**Step 3**  
Remove Cover Screw

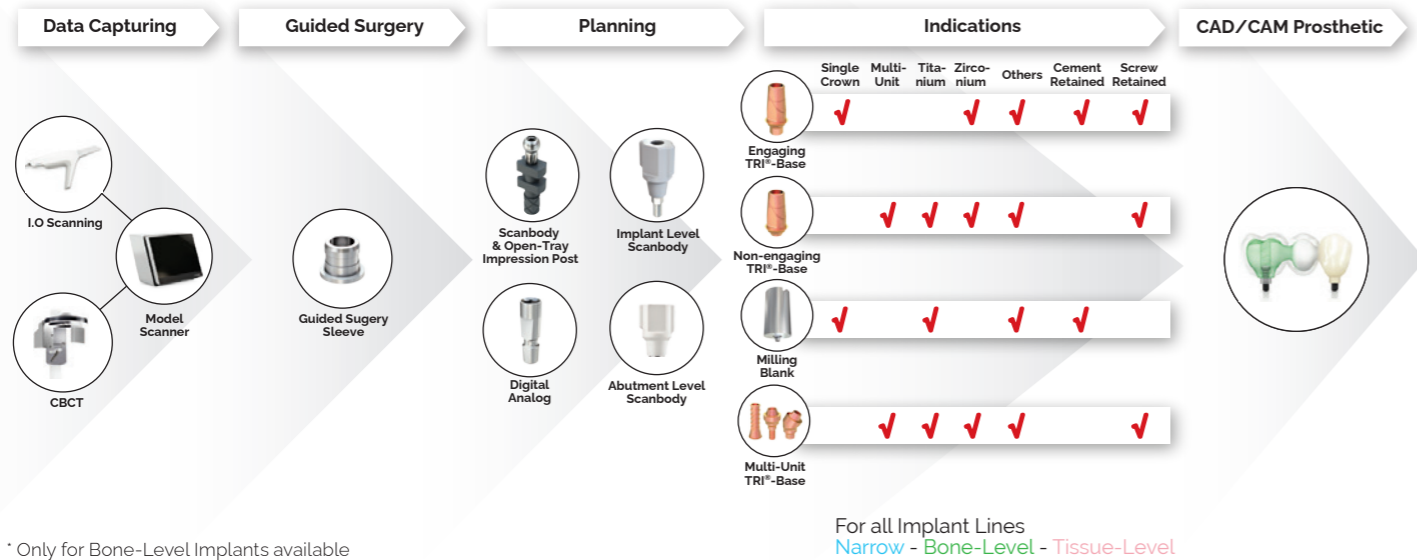


The implant packaging by TRI<sup>®</sup> integrates the latest engineering knowhow and innovation. Its revolutionary touchless delivery concept allows to pick-up the implant directly with the surgical hand-piece in one single step. Whilst guaranteeing the highest purity of the TRI<sup>®</sup> SBA surface. A true design innovation which will take your surgical performance to a new level. **Touch it, and you will love it!**

# TRI+ Digital Digital workflow.

TRI Dental Implants sets new standards with TRI+ Digital as a universal implant interface to leading technology partners in digital dentistry. Linked with a lean dental implant system, TRI+ Digital offers treatment options from simple to complex without limits:

- + 3D-Planning & Guided Surgery
- + Customized CAD abutments
- + CAD/CAM Cement-retained crowns and bridges
- + CAD/CAM Screw-retained bars and bridges



\* Only for Bone-Level Implants available

## Digital Treatment Options



matrix®

**NO**  
ABUTMENT.  
**NO**  
CEMENT.  
**NO**  
LIMITS.

The world's first  
implant approved for  
full digital restorations  
**without abutment.**

The matrix® is the world's first dental implant approved for fully digitally single and multi-unit restorations directly on the implant without the use of the abutment. This unique implant connection has been specifically designed for the new digital manufacturing technologies such as CAD/CAM milling or 3D printing.

Discover more





# TRI® Implant Portfolio

## One kit for all implant lines.

The TRI® Performance Line consists of 3 implant lines. All implant lines can be placed with one lean surgical kit. Simply perfect!



# TRI® Solutions

## Immediacy.



### TRI®-Narrow

Ideal with limited horizontal bone.



Ø 3.2 mm



3.3 mm

### TRI®-Vent

The Bone-Level Implant for all indications.



Ø 3.5 mm



3.75 mm



4.1 mm



4.7 mm

### TRI®-Octa

The Tissue-Level Implant for esthetic results in the posterior region.



Ø 4.8 mm



3.75 mm



4.1 mm



4.7 mm

### Diameters & Lengths

	Ø 3.3 mm	Ø 3.75 mm	Ø 4.1 mm	Ø 4.7 mm
L 6.5 mm			● ●	● ●
L 8 mm		● ●	● ●	● ●
L 10 mm	●	● ●	● ●	● ●
L 11.5 mm	● (L 11 mm)	● ●	● ●	● ●
L 13 mm	●	● ●	● ●	● ●
L 16 mm	●	●	●	●

## IMMEDIATE STABILITY. STRONG AS A ROCK.

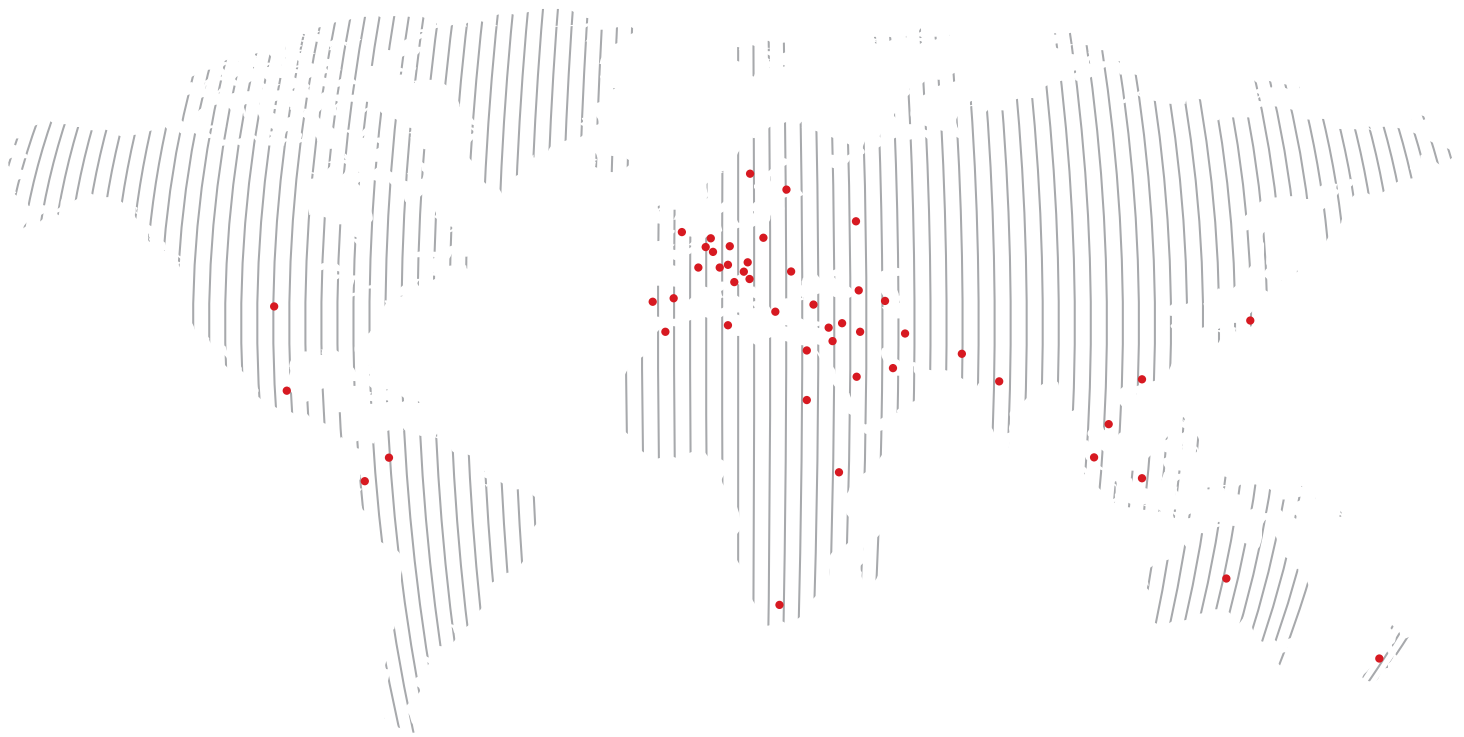
With the innovative TRI® BoneAdapt Technology, TRI® provides a smart and aggressive implant design that outperforms existing industry standards in terms of Primary Stability\*. The benefit for clinicians and patients is a state-of-the-art treatment option at the day of surgery such as ALL-ON-TRI®, resulting in immediate satisfaction for a higher quality of life. Learn more about our TRI® Solutions on [tri.swiss/solutions](http://tri.swiss/solutions).

\*Based on in vitro bench testing in collaboration with University Center for Dental Medicine, Basel.



## CHOOSE YOUR SOLUTION





**TRI Dental Implants Int. AG**  
Switzerland  
00800 3313 3313  
[www.tri.swiss](http://www.tri.swiss)



TRI® Dental Implants logotype and all other trademarks used in this document are, if nothing else is stated or is evident from the context in a certain case, trademarks of TRI® Dental Implants Int. AG.

TRI® Performance Line Systemoverview EN 2022-04/01



CE 0297 | FDA Registered